

ROBERTO BRUNA  
**CATALOGUE**  
**2025**

UK SPECIAL EDITION

Prices are all-inclusive (VAT and custom duties)



# INDEX

## (1-1/4") (1") (3/4")

- 6** TARANTULA 1"  
MAINTENANCE KIT
- 7** TARANTULA 3/4"  
MAINTENANCE KIT
- 8** GRENADE 80  
GRENADE 60
- 9** GRENADE 120  
GRENADE 100
- 10** BULLET GRENADE 60  
GRENADE 70
- 11** FLOUNDER 1"  
FRANKENSTEIN
- 12** ALIEN 1"  
MAINTENANCE KIT
- 13** ALIEN 3/4"  
MAINTENANCE KIT
- 14** BREAKER 1"  
BASIC 3/4"
- 15** VAMPIRE 1"  
VAMPIRE 3/4"
- 16** TANK CLEANER 1"  
TANK CLEANER 3/4"  
HEAD

## (1/2") (3/8")

- 18** TARANTULA 80  
MAINTENANCE KIT
- 19** TARANTULA 1/2"  
MAINTENANCE KIT
- 20** TARANTULA 1/2" - EasyCare  
MAINTENANCE KIT
- 21** TARANTULA 3/8"  
MAINTENANCE KIT
- 22** BREAKER 1/2"  
BREAKER 3/8"
- 23** ALIEN TURBO 1/2"  
MAINTENANCE KIT
- 24** ALIEN 1/2"  
MAINTENANCE KIT
- 25** HEAVY FLOUNDER 1/2"  
LIGHT FLOUNDER 1/2"
- 26** GRENADE 50  
LYNX 1/2"
- 27** HYDRO-SPIN 1/2"  
ROOT-CUTTER 1/2"
- 28** HEAVY VIBRATING 1/2"  
LIGHT VIBRATING 1/2"
- 29** BUTTON 1/2"  
BRUNA 1/2"
- 30** BUTTON 1/2" 12 JETS  
BUTTON 1/2" MIXED
- 31** GRADES 30° 6 JETS  
GRADES 7° 6 JETS
- 32** BULLET 1/2"  
VAMPIRE 1/2"
- 33** ROTATORY WIPE-CATCHER 1/2"  
BASIC WIPE-CATCHER 1/2"
- 34** TIGER 3/8"  
BASIC 3/8"
- 35** ANACONDA *the big one*  
ANACONDA *the small one*
- 36** CAMERA NOZZLE 1/2"  
ANACONDA 3/8"
- 37** TANK CLEANER 1/2"  
HEAD

## (1/4") (1/8")

- 39** ALIEN 1/4"  
MAINTENANCE KIT
- 40** TARANTULA 1/4"  
MAINTENANCE KIT
- 41** BREAKER 1/4"  
TIGER 1/4"
- 42** BASIC 1/4"  
BRUNA 1/4"
- 43** ROTATORY WIPE-CATCHER 1/4"  
ANACONDA 1/4"
- 44** MINI VIBRATING 1/4"  
ROOT-CUTTER 1/4"
- 45** K-TURBO 1/8" 6 JETS  
K-TURBO 1/8" 3 JETS
- 46** BREAKER 1/8"  
ANACONDA 1/8"
- 47** CAMERA NOZZLE 1/4"

## OTHER PRODUCTS

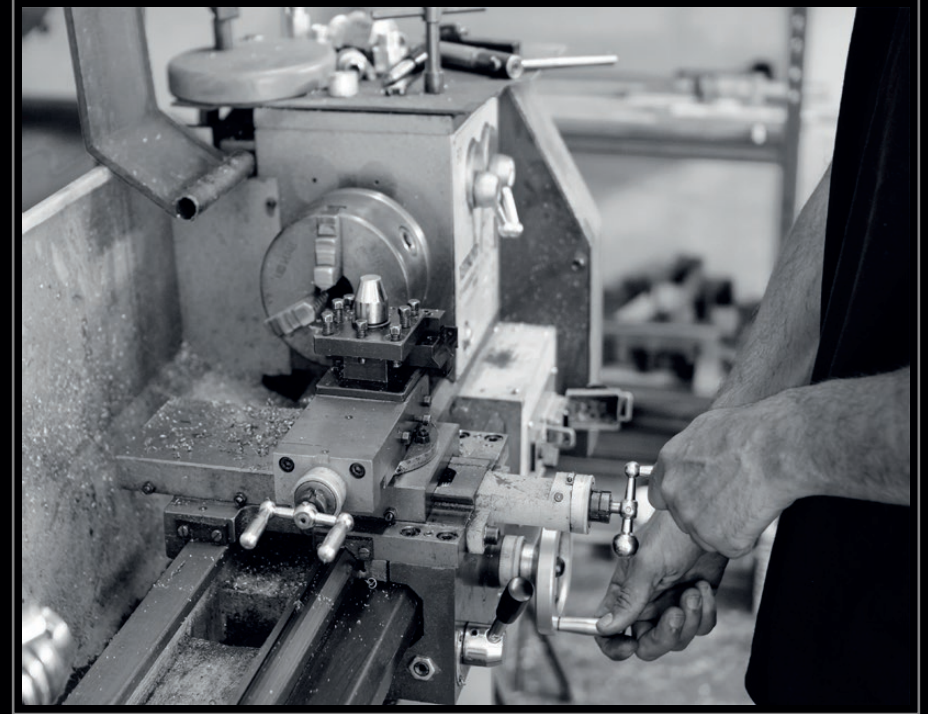
- 49-53** INSPECTION CAMERAS
- 54** NOZZLE HOLDER
- 55** MAGNETIC MANHOLE LIFTER  
FLEX HOSES
- 56** ANTI-RETURN BAR  
REEL
- 57** TURBOROTATING  
VENTURY



## High-Performance Jetting Nozzles You Can Trust

We design and manufacture high-performance jetting nozzles for pipe and sewer cleaning. Each nozzle is precisely engineered and calibrated to match the pump output of jetters and vacuum trucks, ensuring maximum efficiency in cleaning and sewer rehabilitation.

Our nozzles are trusted by municipalities, environmental service providers, plumbing professionals, and specialized contractors across the industry. Whether for routine maintenance or rehabilitation projects, our solutions deliver the power, durability, and performance needed to get the job done.







**1-1/4"**

**1"**

**3/4"**

# DEEP CLEANING

ROOTS | LIMESCALE | SOAPS

## TARANTULA 1"

**Thread:** (1" - 1/4") or 1" or 3/4"

**Pipe diameter:** 300- 600 mm *(recommended)*

**Jets:** (R) 2 x M10 (25°) // (F) 1 x M10 (15°)

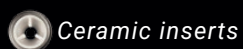
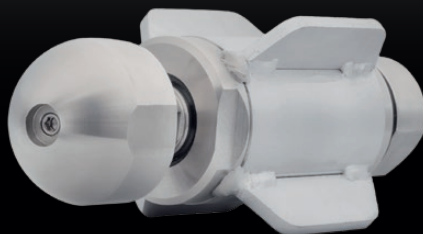
**Waterflow:** from 44 gpm

**Dimensions:** 120 x 230 mm

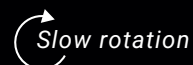
**Weight:** 4.3 kg

Price: **GBP £1,230.00** \*VAT and custom duties included

Designed for pipe maintenance, especially when the removal of roots obstructing pipes is required.



Ceramic inserts



Slow rotation

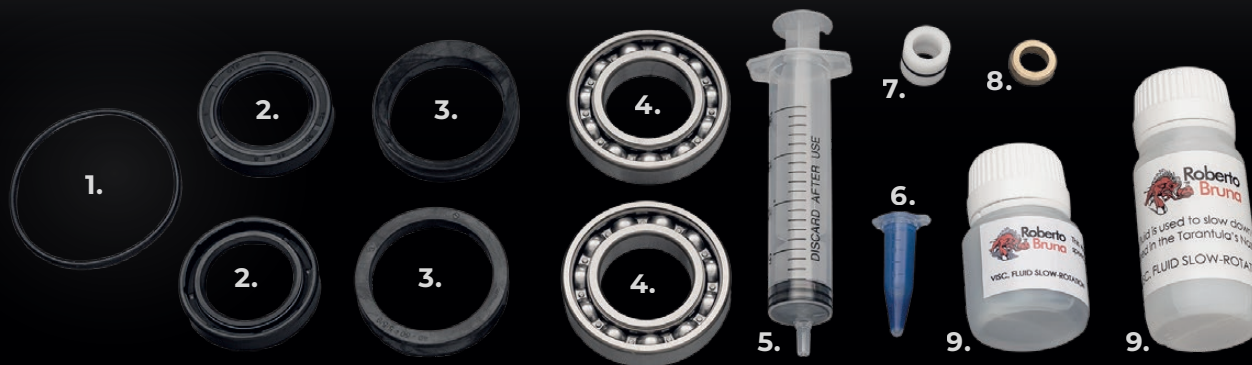


Optional front jet

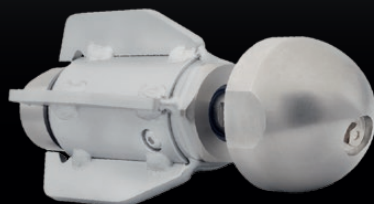
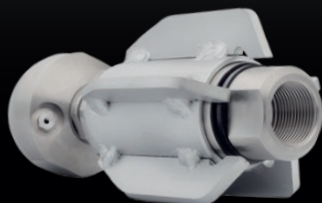
## MAINTENANCE KIT

1. O-ring
2. Shaft Seal
3. Weep Seal
4. Bearing
5. Dispensing Syringe
6. Adhesive
7. High pressure seal
8. Brass seat
9. Viscous Fluid

Price: **GBP £80.00** \*VAT and custom duties included



## TARANTULA 3/4"



**Thread:** 3/4"

**Pipe diameter:** 250 - 400 mm *(recommended)*

**Jets:** (R) 2 x M8 (25°) // (F) 1 x M8 (15°)

**Waterflow:** from 22 to 47 gpm

**Dimensions:** 86 x 190 mm

**Weight:** 2.2 kg

**Price: GBP £885.00** \*VAT and custom duties included

Just like the 1" model, our 3/4" Tarantula stands out for its ability to cut and remove roots from inside pipes thanks to its head with two jets that spins automatically.

Optional front jet



Ceramic inserts



Slow rotation

## MAINTENANCE KIT

1. Viscous Fluid

2. Dispensing Syringe with sealing washers

3. Adhesive

4. Grease fitting

5. High pressure seal & Brass seat

6. Bearing

7. Shaft Seal

8. Weep Seal

9. O-ring

10. Wave Spring

**Price: GBP £75.00** \*VAT and custom duties included





# GENERAL CLEANING

## GRENADE 80

**Thread:** 1" or 3/4"

**Pipe diameter:** 250 - 500 mm *(recommended)*

**Jets:** (R) 10 x M8 (30° - 10°) // (F) 1 x M8

**Waterflow:** from 35 gpm


**Dimensions:** 80 X 170 mm

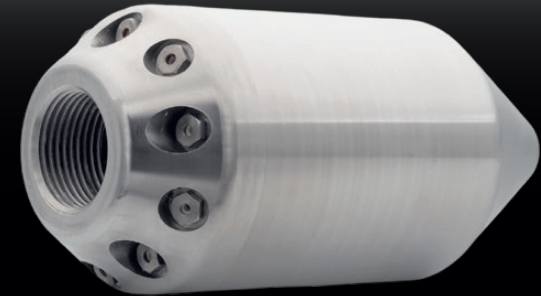
**Weight:** 4 kg

**Price: GBP £480.00** \*VAT and custom duties included

Known for its efficiency and functionality, with rear jets at 30° and 10° that ensure water reaches the pipe walls effectively for optimal cleaning performance.



 Ceramic inserts



## GRENADE 60

**Thread:** 1" or 3/4"

**Pipe diameter:** 200 - 300 mm *(recommended)*

**Jets:** (R) 6 x M8 (30° - 10°) // (F) 1 x M8

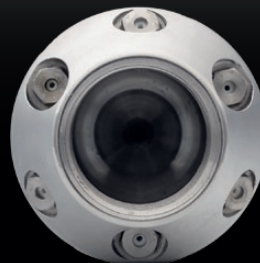
**Waterflow:** from 35 gpm


**Dimensions:** 60 x 110 mm

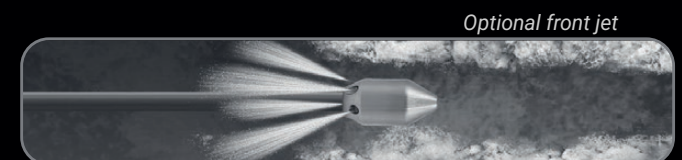
**Weight:** 1.3 kg

**Price: GBP £315.00** \*VAT and custom duties included

Nozzles with rear jets at different angles for general cleaning, removing soap, grease, and all kinds of common buildup inside the pipe system.



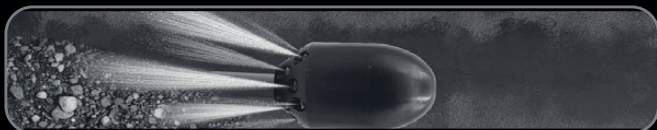
 Ceramic inserts




# BOTTOM CLEANING

DIRT | SAND | DEBRIS

## GRENADE 120



 *Ceramic inserts*

**Thread:** (1" - 1/4") or 1"

**Pipe diameter:** 300 - 800 mm (*recommended*)

**Jets:** (R) 15 x M13 (7° - 15° - 20°)

**Waterflow:** from 55 gpm

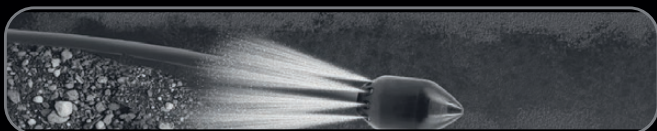
**Dimensions:** 120 X 190 mm


**Weight:** 10 kg

**Price: GBP £880.00** \*VAT and custom duties included

It is built to release water jets in a laminar flow, without turbulence, creating high-impact streams. Perfect for removing sand and stones from the bottom of the pipelines.

## GRENADE 100



 *Ceramic inserts*

**Thread:** 1" or 3/4"

**Pipe diameter:** 300 - 600 mm (*recommended*)

**Jets:** (R) 10 x M8 (7° - 15°)

**Waterflow:** from 44 gpm

**Dimensions:** 100 X 177 mm

**Weight:** 4 kg

**Price: GBP £660.00** \*VAT and custom duties included

Its jets are strategically positioned to maximize the dragging of sediment and built-up dirt, allowing for a deep and uniform cleaning throughout the pipe interior.

# BOTTOM CLEANING

DIRT | SAND | DEBRIS

## BULLET GRENADE 60

**Thread:** 1" or 3/4"

**Pipe diameter:** 200 - 300 mm *(recommended)*

**Jets:** (R) 6 x M8 (10°)

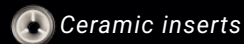
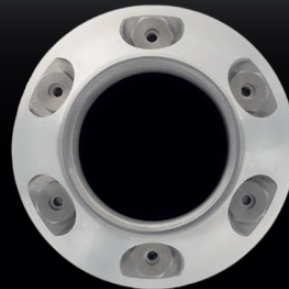
**Waterflow:** from 13 gpm

**Dimensions:** 60 x 110 mm

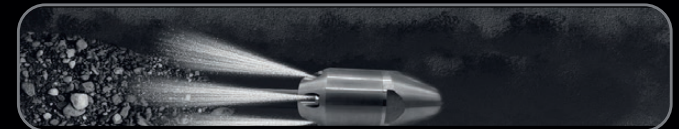
**Weight:** 1.3 kg

**Price:** **GBP £315.00** \*VAT and custom duties included

Specially designed to travel long distances quickly, the combination of different rear jet angles provides versatility that significantly improves cleaning efficiency.



Ceramic inserts



## GRENADE 70

**Thread:** 1" or 3/4"

**Pipe diameter:** 200-400 mm *(recommended)*

**Jets:** 12 x M8 (7° - 14° - 21°)

**Waterflow:** from 30 gpm

**Dimensions:** 70 X 125 mm

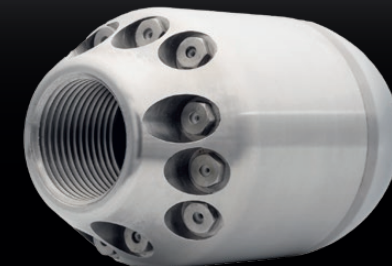
**Weight:** 2 kg

**Price:** **GBP £435.00** \*VAT and custom duties included

Made of stainless steel, it offers durability and strength, and stands out for its ability to remove debris from the bottom of pipes thanks to its six powerful rear jets.



Ceramic inserts

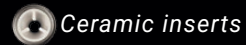




## FLOUNDER 1"



Swivel fitting included



Ceramic inserts

**Thread:** 1" or 3/4"

**Pipe diameter:** 250 - 700 mm (*recommended*)

**Jets:** (R) 8 x M8 (5° - 10°)

**Waterflow:** from 44 gpm

**Dimensions:** 145x225 // 145x340 mm (*swivel fitting*)

**Weight:** 9 kg

**Price: GBP £725.00** \*VAT and custom duties included

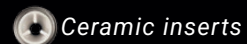
Bottom-cleaning nozzle with a flat shape and an internal channeling system that increases thrust power, making it perfect for cleaning the bottom of pipelines.



## FRANKENSTEIN



Swivel fitting included



Ceramic inserts

**Thread:** 1" or 3/4"

**Pipe diameter:** 300 - 600 mm (*recommended*)

**Jets:** (R) 5 x M8

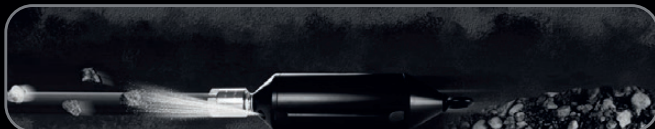
**Waterflow:** from 44 gpm

**Dimensions:** 100 x 170 mm

**Weight:** 12 kg

**Price: GBP £815.00** \*VAT and custom duties included

Designed with a tubular body, it includes an internal counterweight to maintain stability during operation, ensuring the water jets always hit the bottom of the pipe.



# DEEP UNBLOCKING

## ALIEN 1"

**Thread:** 1" or 3/4"

**Pipe diameter:** 200 - 500 mm *(recommended)*

**Jets:** (R) 6 x M8 (30° - 10°) + 1 *rotating front jet*

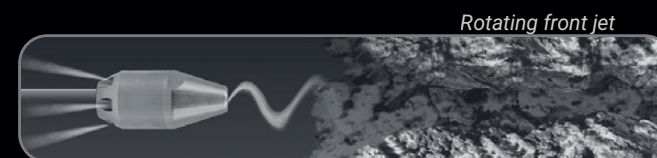
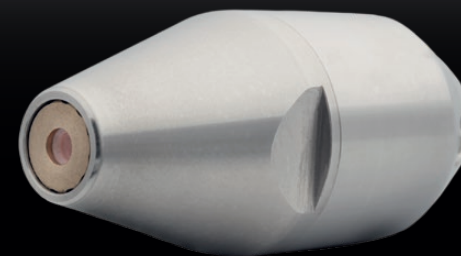
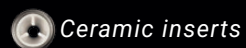
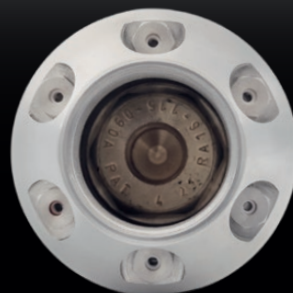
**Waterflow:** from 35 gpm

**Dimensions:** 60 x 134 mm

**Weight:** 1.57 kg

**Price: GBP £360.00** \*VAT and custom duties included

Its conical shape and rotating front jet allow it to drill and move forward quickly, providing a thorough and effective unclogging performance.



## MAINTENANCE KIT

Front plate

Jet Cartridge

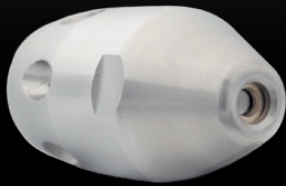
Small O-ring

Large O-ring

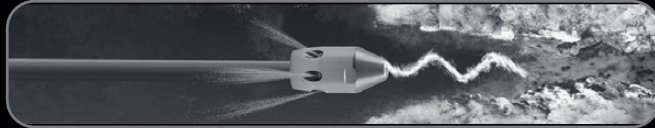
**Price: GBP £95.00** \*VAT and custom duties included




## ALIEN 3/4"



Rotating front jet



 Ceramic inserts

**Thread:** 3/4"

**Pipe diameter:** 200 - 400 mm (*recommended*)

**Jets:** (R) 6 x M6 (30°) + 1 *rotating front jet*

**Waterflow:** from 26 gpm

**Dimensions:** 50 x 90 mm

**Weight:** 0.35 kg

**Price:** **GBP £275.00** \*VAT and custom duties included

The combination of its conical head and rear jets provides exceptional unclogging power, ensuring every corner of the pipe remains completely free of obstructions.

## MAINTENANCE KIT



1.



2.



3.



4.

1. Rear cap

2. Jet

3. Jet Housing

4. Front plate

**Price:** **GBP £65.00** \*VAT and custom duties included



# DEEP UNBLOCKING

## BREAKER 1"

**Thread:** 1" or 3/4"

**Pipe diameter:** 200 - 500 mm (*recommended*)

**Jets:** (R) 6 x M6 (25°) // (F) 3 x M6 (15°) + 1 x M6

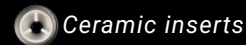
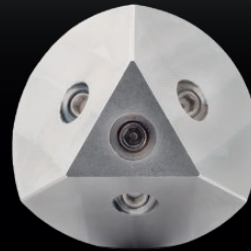
**Waterflow:** from 35 gpm

**Dimensions:** 60 x 134 mm

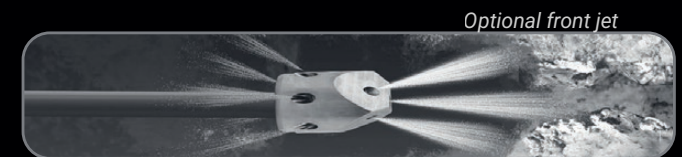
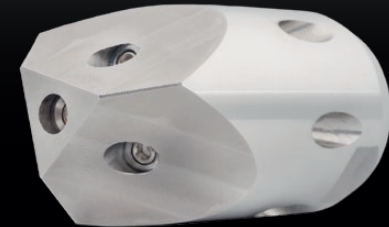
**Weight:** 0.68 kg

**Price: GBP £185.00** \*VAT and custom duties included

Cutting head with three front jets and six rear jets, the breaker plows through everything in its path, delivering extreme and efficient cleaning performance.



Ceramic inserts



## BASIC 3/4"

**Thread:** 3/4" or 1/2"

**Pipe diameter:** 160 - 300 mm (*recommended*)

**Jets:** (R) 6 x M6 (15°) // (F) 1 x M6

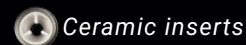
**Waterflow:** from 18 gpm

**Dimensions:** 50 X 67 mm

**Weight:** 0.43 kg

**Price: GBP £125.00** \*VAT and custom duties included

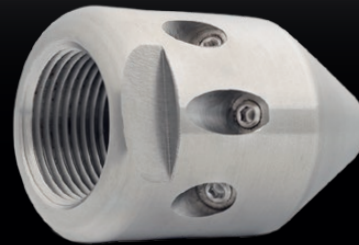
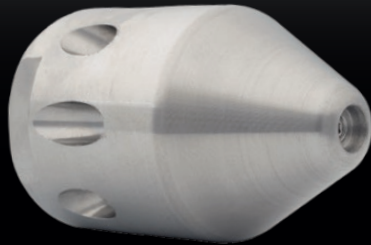
Its basic, economical, and practical design makes it an efficient option for pipe unclogging, ensuring that obstructions are effectively removed every time.



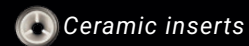
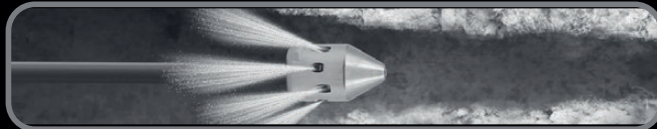
Ceramic inserts



## VAMPIRE 1"



Optional front jet



Ceramic inserts

**Thread:** 1"

**Pipe diameter:** 250 - 400 mm *(recommended)*

**Jets:** (R) 8 x M6 (15° - 30°) // (F) 1 x M6

**Waterflow:** from 40 gpm

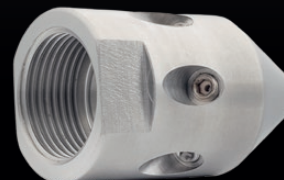
**Dimensions:** 50 X 70 mm

**Weight:** 0.55 kg

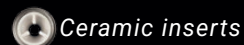
**Price:** **GBP £165.00** \*VAT and custom duties included

The Vampire nozzle stands out for its ability to clean pipes thanks to its design with 35° rear jets, delivering extreme and efficient cleaning performance.

## VAMPIRE 3/4"



Optional front jet



Ceramic inserts

**Thread:** 3/4"

**Pipe diameter:** 200 - 300 mm *(recommended)*

**Jets:** (R) 6 x M6 (7° - 30°) // (F) 1 x M6

**Waterflow:** from 26 gpm

**Dimensions:** 35 X 61 mm

**Weight:** 0.23 kg

**Price:** **GBP £95.00** \*VAT and custom duties included

Especially useful for general cleaning tasks, removal of solid waste, soaps, and other blockages, it offers great flexibility for use in pipes of various diameters.

## 1" TANK CLEANING NOZZLE



**Thread:** 1"

**Dimensions:** 27 x 25 mm (body)

**Weight:** 4.7 kg

**Price: GBP £1,215.00**

*\*VAT and custom duties included*

## 3/4" TANK CLEANING NOZZLE



**Thread:** 3/4"

**Dimensions:** 27 x 25 mm (body)

**Weight:** 2.4 kg

**Price: GBP £930.00**

*\*VAT and custom duties included*

## HEAD



**3 extension bar kit: GBP £105.00**

*\*VAT and custom duties included*



**Weight:** 0.94 kg

**Dimensions:** 170 x 50 mm

*Manual operation possible  
using only the cutting head*

**Price: GBP £295.00**

*\*VAT and custom duties included*





**1/2"**

**3/8"**

# DEEP CLEANING

ROOTS | LIMESCALE | SOAPS

## TARANTULA 80

**Thread:** 1/2" or 3/8"

**Pipe diameter:** 125 - 300 mm *(recommended)*

**Jets:** (R) 2 x M8 // (F) 1 x M8

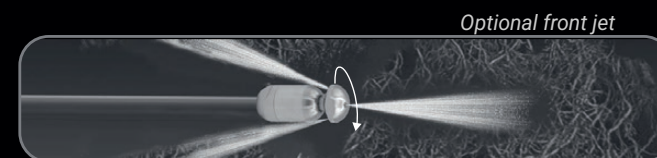
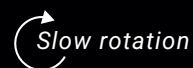
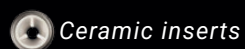
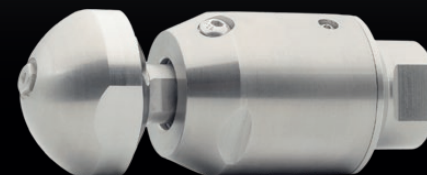
**Waterflow:** from 18 gpm

**Dimensions:** 48 x 126 mm

**Weight:** 1.02 kg

**Price: GBP £590.00** \*VAT and custom duties included

Forget about maintenance for a long time. This model has a long service life thanks to the additional adjustable oil reservoir.



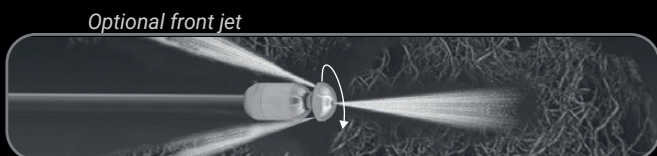
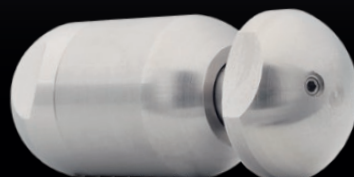
## MAINTENANCE KIT

1. O-ring
2. Shaft Seal
3. Bearing
4. Dispensing Syringe with sealing washers
5. Adhesive
6. High pressure seal & Brass seat
7. Grease Fitting & Sealing Washer
8. Viscous Fluid

**Price: GBP £65.00** \*VAT and custom duties included



## TARANTULA 1/2"



Ceramic inserts



Slow rotation

**Thread:** 1/2" or 3/8"

**Pipe diameter:** 110 - 250 mm *(recommended)*

**Jets:** (R) 2 x M6 // (F) 1 x M4

**Waterflow:** from 9 gpm

**Dimensions:** 38 x 93 mm

**Weight:** 0.48 kg

**Price: GBP £430.00** \*VAT and custom duties included

Slow-rotation nozzle, focuses the machine's flow into 2 rear jets that spin slowly. Able to cut roots or any kind of hard sediment.

## MAINTENANCE KIT



1. Viscous Fluid

2. Grease Fitting & Sealing Washer

3. Adhesive

4. High pressure seal & Brass seat

5. Dispensing Syringe with sealing washers

6. Bearing

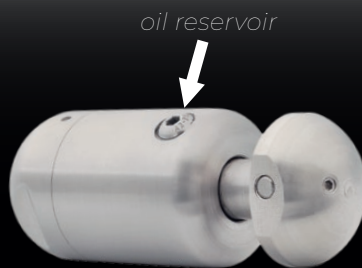
7. Sealing Ring

8. Shaft Sea

9. O-Ring

**Price: GBP £65.00** \*VAT and custom duties included

## TARANTULA 1/2" - EasyCare



oil reservoir

**Thread:** 1/2" or 3/8"

**Pipe diameter:** 110 - 250 mm *(recommended)*

**Jets:** (R) 2 x M6 // (F) 1 x M4

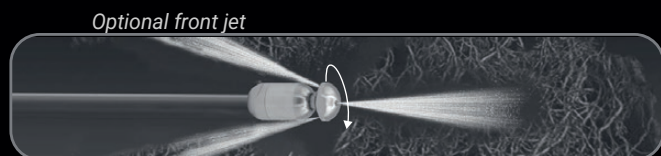
**Waterflow:** from 9 gpm

**Dimensions:** 38 x 93 mm

**Weight:** 0.48 kg

**Price: GBP £510.00** \*VAT and custom duties included

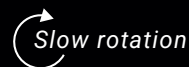
Slow-rotation nozzle, focuses the machine's flow into 2 rear jets that spin slowly. Able to cut roots or any kind of hard sediment. This model comes with a port for direct access to an **additional oil reservoir** for Easy-Care, prolonging its service life and reducing maintenance needs.



Optional front jet



Ceramic inserts



Slow rotation

## MAINTENANCE KIT



1. Viscous Fluid

2. Grease Fitting & Sealing Washer

3. Adhesive

4. High pressure seal & Brass seat

5. Dispensing Syringe with sealing washers

6. Bearing

7. Sealing Ring

8. Shaft Sea

9. O-Ring

**Price: GBP £65.00** \*VAT and custom duties included



# DEEP CLEANING

ROOTS | LIMESCALE | SOAPS

## TARANTULA 3/8"

**Thread:** 3/8" or 1/4"

**Pipe diameter:** 90 - 250 mm *(recommended)*

**Jets:** (R) 2 x M4

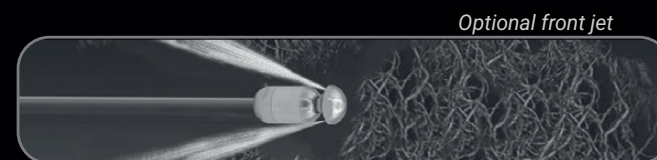
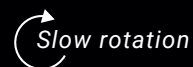
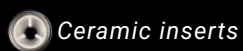
**Waterflow:** from 8 gpm

**Dimensions:** 28 x 67 mm

**Weight:** 0.194 kg

**Price:** **GBP £330.00** \*VAT and custom duties included

Slow-rotating nozzle that focuses the flow into 2 rear jets spinning at low speed, capable of cutting roots or any kind of hard sediment.



## MAINTENANCE KIT

1. O-Ring

2. Sealing Ring

3. Shaft Seal

4. Bearing

5. Dispensing Syringe

6. High pressure seal & Brass seat

7. Adhesive

8. Viscous Fluid

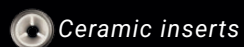
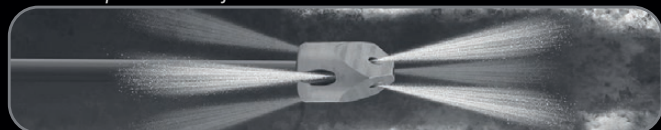
**Price:** **GBP £40.00** \*VAT and custom duties included



## BREAKER 1/2"



Optional front jet



**Thread:** 1/2"

**Pipe diameter:** 75 - 200 mm (*recommended*)

**Jets:** (R) 3 x M6 // (F) 3 x M4 + 1 x M4

**Waterflow:** from 9 gpm

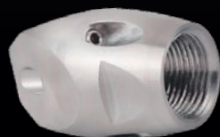
**Dimensions:** 35 x 56 mm

**Weight:** 0.2 kg

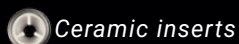
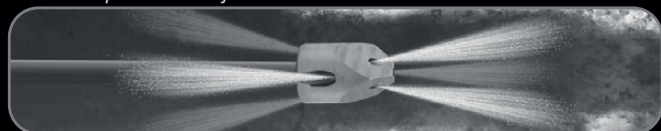
**Price:** **GBP £130.00** \*VAT and custom duties included

Nozzle designed with powerful front jets capable of clearing the toughest blockages.

## BREAKER 3/8"



Optional front jet



**Thread:** 3/8"

**Pipe diameter:** 75 - 200 mm (*recommended*)

**Jets:** (R) 3 x M4 // (F) 3 x M4 + 1 x M4

**Waterflow:** from 8 gpm

**Dimensions:** 26 x 44 mm

**Weight:** 0.08 kg (80 gr)

**Price:** **GBP £100.00** \*VAT and custom duties included

3/8" version of the classic Breaker nozzle; its compact size allows it to reach the tightest spots with its original power. Ideal for precision work in narrow or hard-to-reach areas.

## ALIEN TURBO 1/2"

**Thread:** 1/2" or 3/8"

**Pipe diameter:** 125 - 300 mm *(recommended)*

**Jets:** (R) 3 x M6 (7°) + 1 *rotating front jet*

**Waterflow:** from 9 gpm


**Dimensions:** 45 x 125 mm

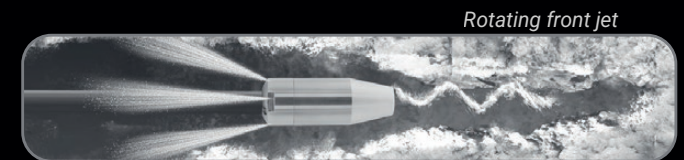
**Weight:** 0.905 kg

**Price:** **GBP £315.00** \*VAT and custom duties included

Designed for cleaning and unblocking pipes, especially where the removal of difficult blockages and obstructions is required.



 **Ceramic inserts**



*Rotating front jet*

## MAINTENANCE KIT

**1.** Front plate

**2.** Jet Cartridge

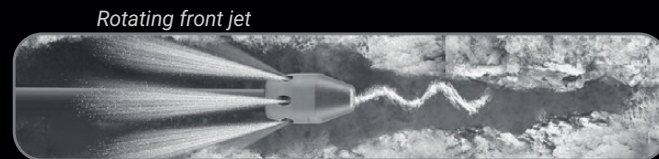
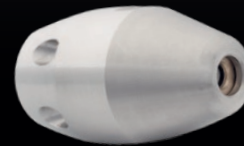
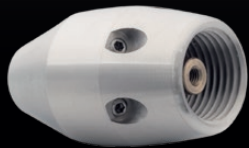
**3.** Small O-ring

**4.** Large O-ring

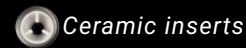
**Price:** **GBP £95.00** \*VAT and custom duties included



## ALIEN 1/2"



Rotating front jet



Ceramic inserts

**Thread:** 1/2" or 3/8"

**Pipe diameter:** 90 - 160 mm (*recommended*)

**Jets:** (R) 6 x M4 (15°) + 1 *rotating front jet*

**Waterflow:** from 9 gpm

**Dimensions:** 32 x 56 mm

**Weight:** 0.17 kg

**Price:** **GBP £195.00** \*VAT and custom duties included

Its conical shape and rotating front jet allow it to drill and advance quickly, providing a complete and effective unblocking.

## MAINTENANCE KIT



1.



2.



3.



4.

1. Rear cap

2. Jet

3. Jet Housing

4. Front plate

**Price:** **GBP £65.00** \*VAT and custom duties included



# BOTTOM CLEANING

DIRT | SAND | DEBRIS

## HEAVY FLOUNDER 1/2"

**Thread:** 1/2" or 3/8"

**Pipe diameter:** 160 - 400 mm (*recommended*)

**Jets:** (R) 4 x M6 (5°)

**Waterflow:** from 18 gpm

**Dimensions:** 90 x 150 mm // 90 x 240 mm (*w/ swivel*)

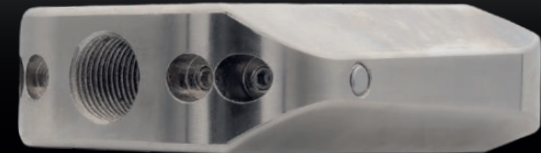
**Weight:** 3.2 kg


**Price:** **GBP £395.00** \*VAT and custom duties included

Nozzles with low-slope rear jets to carry away all types of sediment, such as gravel, stones or debris.



SWIVEL FITTING INCLUDED



 Ceramic inserts



## LIGHT FLOUNDER 1/2"

**Thread:** 1/2" or 3/8"

**Pipe diameter:** 160 - 400 mm (*recommended*)

**Jets:** (R) 4 x M6 (5°)

**Waterflow:** from 9 gpm

**Dimensions:** 90 x 150 mm // 90 x 240 mm (*w/ swivel*)

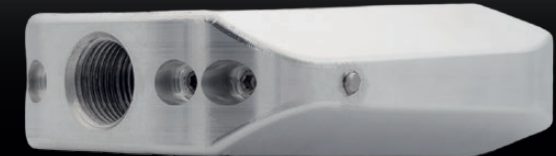
**Weight:** 0.936 kg // 1.32 kg (*w/ thread*)


**Price:** **GBP £250.00** \*VAT and custom duties included

The aluminium construction of this nozzle provides a weight reduction of 4.4 lbs compared to its steel counterpart, giving a higher travel speed.



SWIVEL FITTING INCLUDED



 Ceramic inserts



# BOTTOM CLEANING

DIRT | SAND | DEBRIS

## GRENADE 50



**Thread:** 1/2" or 3/8"

**Pipe diameter:** 125 - 300 mm (*recommended*)

**Jets:** (R) 8 x M8 (7° - 15°)

**Waterflow:** from 9 gpm


**Dimensions:** 50 x 95 mm

**Weight:** 0.75 kg

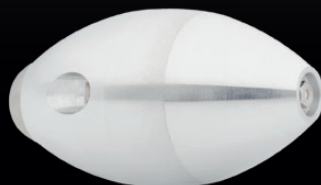
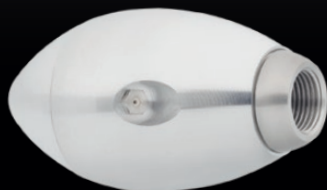
**Price:** GBP £215.00 \*VAT and custom duties included

Nozzles with low-slope rear jets to carry away all types of sediment, such as gravel, stones or debris.



 *Ceramic inserts*

## LYNX 1/2"



**Thread:** 1/2" or 3/8"

**Pipe diameter:** 160 - 300 mm (*recommended*)

**Jets:** (R) 3 x M8 (7° o 25°) // (F) 1 x M8

**Waterflow:** from 9 gpm

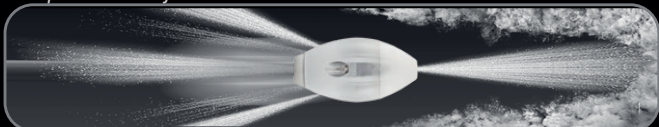
**Dimensions:** 64 x 120 mm


**Weight:** 0.587 kg

**Price:** GBP £190.00 \*VAT and custom duties included

Our Lynx is a lightweight nozzle designed for long distance and bottom cleaning, made of aluminium.

*Optional front jet*



 *Ceramic inserts*

# DEEP CLEANING

HARD SOAPS | ROOTS | HARD REMAINS

## HYDRO-SPIN 1/2"

**Thread:** 1/2" or 3/8"

**Pipe diameter:** 110 - 200 mm *(recommended)*

**Jets:** (R) 6 x M4 // (F) 3 x M4

**Waterflow:** from 9 gpm

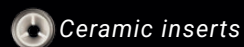
**Dimensions:** 147 x 160 mm // 110 x 160 mm

**Weight:** 0.875 kg

**Price: GBP £395.00** \*VAT and custom duties included

With wheels: 5.8" x 6.3"

Without wheels: 4.3" x 6.3"



Ceramic inserts



## ROOT-CUTTER 1/2"

**Thread:** 1/2" or 3/8"

**Pipe diameter:** 90 - 200 mm *(recommended)*

**Jets:** (R) 6 x M4 // (F) 3 x M4

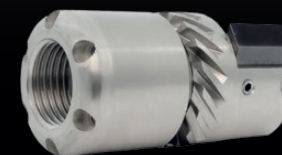
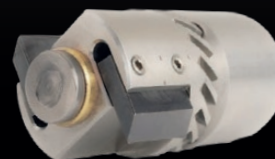
**Waterflow:** from 9 gpm

**Dimensions:** 35 x 70 mm

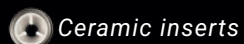
**Weight:** 0.334 kg

**Price: GBP £305.00** \*VAT and custom duties included

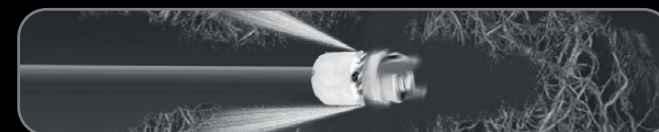
It stands out for its ability to cut and remove roots inside pipes.  
With use, the blades may wear out but are easily replaceable.



available for



Ceramic inserts



## HEAVY VIBRATING 1/2"



**Thread:** 1/2" or 3/8"

**Pipe diameter:** 160 - 300 mm *(recommended)*

**Jets:** (R) 3 x M4 // (S) 2 x M8

**Waterflow:** from 9 gpm


**Dimensions:** 55 x 165 mm

**Weight:** 1.3 kg

**Price:** **GBP £395.00** \*VAT and custom duties included

With increased size and weight, it performs the same function but is aimed at larger deposits and pipelines.



 *Ceramic inserts*

## LIGHT VIBRATING 1/2"



**Thread:** 1/2" or 3/8"

**Pipe diameter:** 90 - 200 mm *(recommended)*

**Jets:** (R) 6 x M4 // (F) 3 x M4

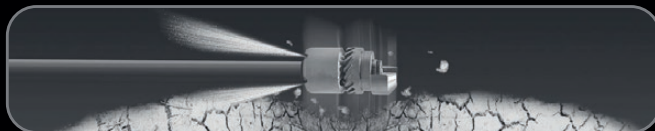
**Waterflow:** from 9 gpm


**Dimensions:** 35 x 69 mm

**Weight:** 0.318 kg

**Price:** **GBP £285.00** \*VAT and custom duties included

Designed to generate powerful vibration, ideal for tough jobs like removing cement and lime scale deposits.



 *Ceramic inserts*



## CLEANING & UNBLOCKING

### BUTTON 1/2"

**Thread:** 1/2" or 3/8"

**Pipe diameter:** 75 - 160 mm *(recommended)*

**Jets:** (R) 6 x M4 (7°) // (F) 1 x M4

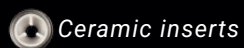
**Waterflow:** from 9 gpm

**Dimensions:** 34 x 31 mm

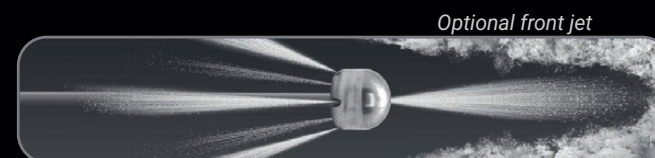
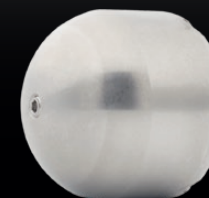
**Weight:** 0.1 kg

**Price: GBP £95.00** \*VAT and custom duties included

Nozzles for daily use for basic unblocking, notable for their small size and high functionality.



Ceramic inserts



### B R U N A 1 / 2 "

**Thread:** 1/2" or 3/8"

**Pipe diameter:** 75 - 160 mm *(recommended)*

**Jets:** (R) 6 drilled jets (20°) // (F) 1 drilled one

**Waterflow:** from 9 gpm

**Dimensions:** 35 x 40 mm

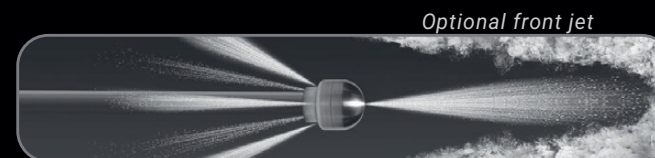
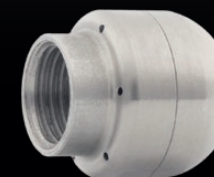
**Weight:** 0.05 kg

**Price: GBP £45.00** \*VAT and custom duties included

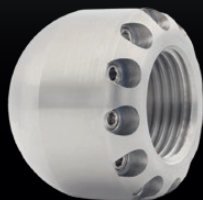
Everyday nozzles for basic unblocking.



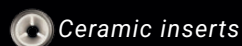
Drilled jets



## BUTTON 1/2" 12 JETS



Optional front jet



Ceramic inserts

**Thread:** 1/2" or 3/8"

**Pipe diameter:** 100 - 200 mm (*recommended*)

**Jets:** (R) 12 x M4 (7°) // (F) 1 x M4

**Waterflow:** from 22 gpm

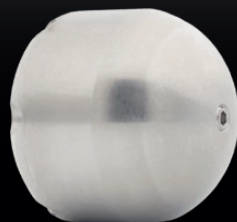
**Dimensions:** 35 x 31 mm

**Weight:** 0.1 kg

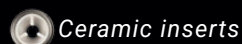
**Price:** **GBP £110.00** \*VAT and custom duties included

Equipped with 12 jets, this nozzle delivers comprehensive cleaning of all internal surfaces and hard-to-reach areas within the pipe.

## BUTTON 1/2" MIXED



Optional front jet



Ceramic inserts

**Thread:** 1/2" or 3/8"

**Pipe diameter:** 75 - 160 mm (*recommended*)

**Jets:** (T) 6 x M4 (7° - 15°) // (D) 1 x M4

**Waterflow:** from 9 gpm

**Dimensions:** 34 x 31 mm

**Weight:** 0.1 kg

**Price:** **GBP £95.00** \*VAT and custom duties included

The mixed nozzle combines jets set at various angles, offering enhanced versatility for a wide range of cleaning applications.

## CLEANING & UNBLOCKING

### GRADES 30° 6 JETS

**Thread:** 1/2" or 3/8"

**Pipe diameter:** 100 - 200 mm *(recommended)*

**Jets:** (R) 6 x M6 (30°) // (F) 1 x M6

**Waterflow:** from 9 gpm

**Dimensions:** 40 x 53 mm

**Weight:** 0.25 kg

**Price: GBP £95.00** \*VAT and custom duties included

Model with 3 rear jets available.



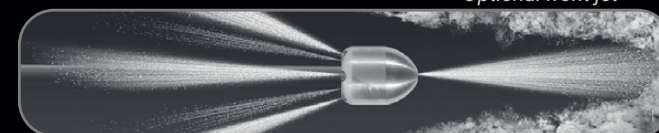
*For cleaning*



*Ceramic inserts*



*Optional front jet*



### GRADES 7° 6 JETS

**Thread:** 1/2" or 3/8"

**Pipe diameter:** 100 - 200 mm *(recommended)*

**Jets:** (R) 6 x M6 (7°) // (F) 1 x M6

**Waterflow:** from 9 gpm

**Dimensions:** 40 x 53 mm

**Weight:** 0.25 kg

**Price: GBP £95.00** \*VAT and custom duties included

Model with 3 rear jets available.



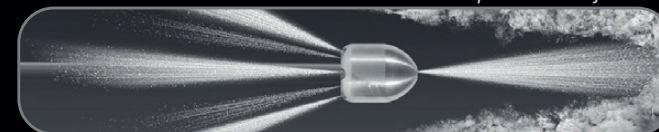
*For unclogging*



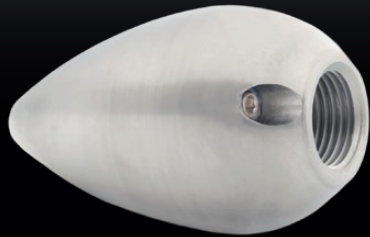
*Ceramic inserts*



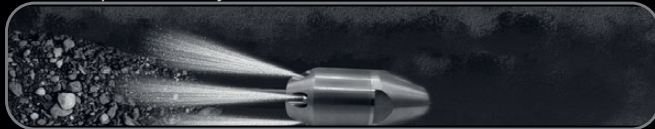
*Optional front jet*




## BULLET 1/2"



Optional front jet



 Ceramic inserts

**Thread:** 1/2" or 3/8"

**Pipe diameter:** 110 - 250 mm *(recommended)*

**Jets:** (R) 3 x M6 // (F) 1 x M6

**Waterflow:** from 9 gpm

**Dimensions:** 47 x 82 mm

**Weight:** 0.6 kg

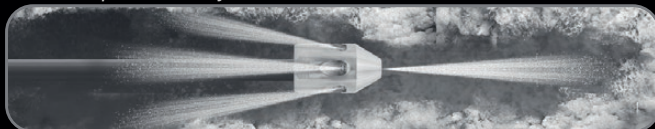
**Price:** **GBP £135.00** \*VAT and custom duties included


Known for its ability to cover long distances and its high functionality.  
Model with 6 rear jets available.

## VAMPIRE 1/2"



Optional front jet



 Ceramic inserts

**Thread:** 1/2" or 3/8"

**Pipe diameter:** 160 - 200 mm *(recommended)*

**Jets:** (R) 6 x M6 // (F) 1 x M6

**Waterflow:** from 9 gpm

**Dimensions:** 30 x 53 mm

**Weight:** 0.15 kg (150 gr)

**Price:** **GBP £90.00** \*VAT and custom duties included

Nozzles with rear jets at different angles for effective pipe cleaning. Ideal for general cleaning, soaps, grease, and all common maintenance tasks.



## ROTATORY WIPE-CATCHER 1/2"

**Thread:** 1/2" or 3/8"

**Pipe diameter:** 75 - 200 mm *(recommended)*

**Jets:** (R) 6 x M4 // (F) 3 x M4

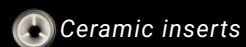
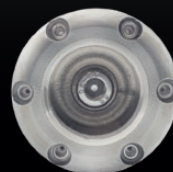
**Waterflow:** from 9 gpm

**Dimensions:** 35 x 64 mm

**Weight:** 0.3 kg

**Price:** **GBP £275.00** \*VAT and custom duties included

Using its rotating turbine, it effectively hooks and removes rags and other textile waste from pipes.



*Ceramic inserts*



## BASIC WIPE-CATCHER 1/2"

**Thread:** 1/2" or 3/8

**Pipe diameter:** 75 - 200 mm *(recommended)*

**Jets:** (R) 6 x M4 // (F) 1 x M4

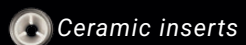
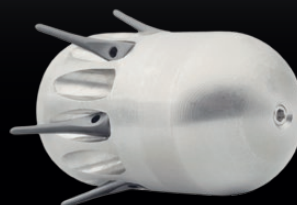
**Waterflow:** from 9 gpm

**Dimensions:** 30 x 50 mm

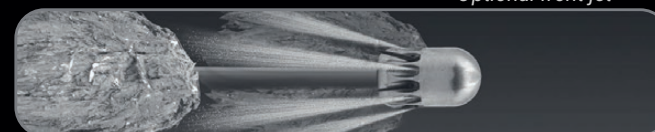
**Weight:** 0.1 kg

**Price:** **GBP £165.00** \*VAT and custom duties included

Specifically designed to hook and remove rags and other textile waste from pipes, the Sacatrapos nozzle stands out for its efficiency and ease of use.

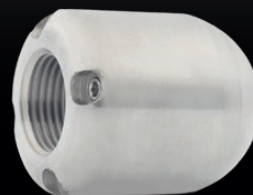
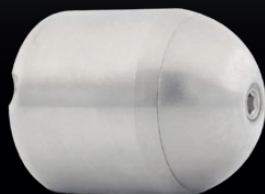


*Ceramic inserts*



*Optional front jet*

## TIGER 3/8"



**Thread:** 3/8"

**Pipe diameter:** 90 - 160 mm *(recommended)*

**Jets:** (R) 4 x M4 // (F) 1 x M6

**Waterflow:** from 7 gpm

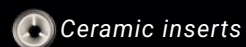
**Dimensions:** 30 x 38 mm

**Weight:** 0.052 kg ( 52 gr )

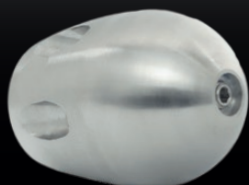
**Price:** **GBP £90.00** \*VAT and custom duties included

The tiger nozzle is ideal for unclogging; its shape and size allow it to penetrate and reach the farthest corners of the pipe.

Optional front jet



## BASIC 3/8"



**Thread:** 3/8" or 1/4"

**Pipe diameter:** 75 - 110 mm *(recommended)*

**Jets:** (R) 6 x M4 // (F) 1 x M4

**Waterflow:** from 9 gpm

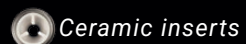
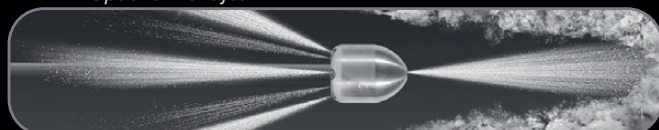
**Dimensions:** 27 x 35 mm

**Peso:** 0.073 kg

**Price:** **GBP £90.00** \*VAT and custom duties included

Compact version of the successful Basic nozzle, perfect for smaller pipelines and equipment, while maintaining the effective design of its larger counterpart.

Optional front jet



# ELBOWS & TEES

## ANACONDA *THE BIG ONE*

**Thread:** 1/2" or 3/8"

**Pipe diameter:** 110 - 200 mm *(recommended)*

**Jets:** (R) 3 x M6 (15°) // (S) 1 x M6

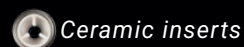
**Waterflow:** from 9 gpm

**Dimensions:** 40 x 65 mm

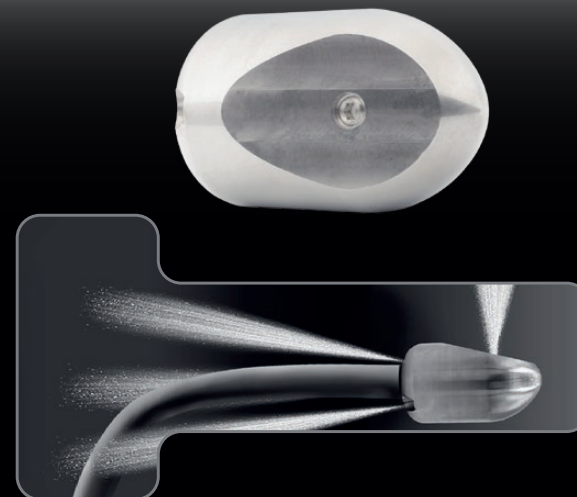
**Weight:** 0.38 kg

**Price: GBP £125.00** \*VAT and custom duties included

Designed to rotate inside inspection chambers using its side jet.



*Ceramic inserts*



## ANACONDA *THE SMALL ONE*

**Thread:** 1/2" or 3/8"

**Pipe diameter:** 75 - 160 mm *(recommended)*

**Jets:** (R) 6 x M4 (7°) // (S) 1 x M4 // (F) 1 x M4

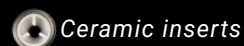
**Waterflow:** from 9 gpm

**Dimensions:** 35 x 31 mm

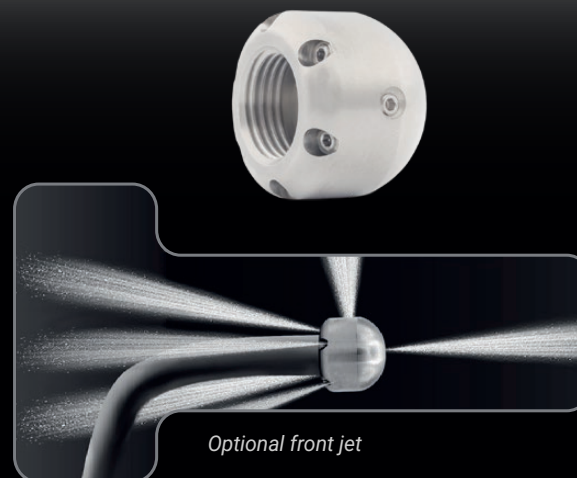
**Weight:** 0.106 kg

**Price: GBP £95.00** \*VAT and custom duties included

Known for its versatility and functionality, it features a side jet that allows quick and easy direction changes to navigate pipe bends.




*Ceramic inserts*



## CAMERA 1/2"



 Ceramic inserts

**Thread:** 1/2" or 3/8"

**Pipe diameter:** 110 - 250 mm (*recommended*)

**Jets:** (R) 3 x M4 (15°)

**Waterflow:** from 9 gpm

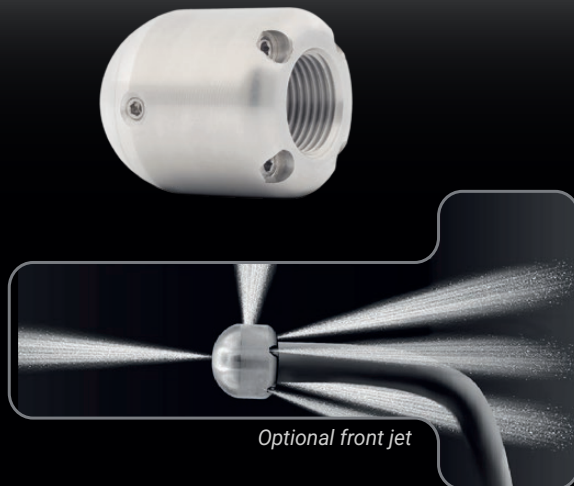
**Dimensions:** 35 x 60 mm


**Weight:** 0.245 kg

**Price:** **GBP £185.00** \*VAT and custom duties included

Designed for easy pushing and handling of the camera head in manual pipe inspections.

## ANACONDA 3/8"



 Ceramic inserts

**Thread:** 3/8" or 1/4"

**Pipe diameter:** 90 - 160 mm (*recommended*)

**Jets:** (R) 4 x M4 // (S) 1 x M4 // (F) 1 x M6

**Waterflow:** from 7 gpm

**Dimensions:** 30 x 38 mm

**Weight:** 0.123 kg

**Price:** **GBP £90.00** \*VAT and custom duties included

It stands out for its versatility and functionality, with a side jet that allows you to change direction and pass pipe bends quickly and easily.



## TANK CLEANER 1/2"



**Thread:** 1/2"

**Dimensions:** 27 x 15 mm (body)

**Weight:** 1.7 kg (body)

**Price: GBP £605.00**

*\*VAT and custom duties included*

## HEAD



**Weight:** 0.939 kg

**Dimensions:** 246 x 50 mm

*Manual operation possible  
using only the cutting head*

**Price: GBP £295.00**

*\*VAT and custom duties included*



**3 extension bar kit: GBP £105.00**

*\*VAT and custom duties included*



**1/4"**

**1/8"**

## ALIEN 1/4"

**Thread:** 1/4" or 1/8"

**Pipe diameter:** 75 - 160 mm *(recommended)*

**Jets:** (R) 3 drilled holes // 1 rotating front jet

**Waterflow:** from 9 gpm

**Dimensions:** 23 x 40 mm

**Weight:** 0.133 kg

**Price: GBP £185.00** \*VAT and custom duties included

Forget about maintenance for a long time. This model has a long service life thanks to the additional adjustable oil reservoir.



*Drilled jets*



*Rotating front jet*



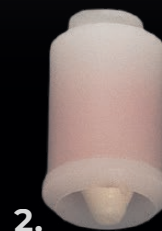
## MAINTENANCE KIT

**1.** Ceramic Ring

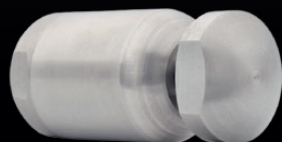
**2.** Jet Insert

**3.** O-Ring

**Price: GBP £65.00** \*VAT and custom duties included



## TARANTULA 1/4"



Ceramic inserts



Slow rotation

**Thread:** 1/4" or 1/8"

**Pipe diameter:** 75 - 160 mm (*recommended*)

**Jets:** (R) 2 x M4

**Waterflow:** from 9 gpm

**Dimensions:** 28 x 62 mm

**Weight:** 0.19 kg

**Price:** **GBP £300.00** \*VAT and custom duties included

Thanks to its automatically rotating dual-jet head, it provides extreme cleaning and cutting of any roots it encounters.

## MAINTENANCE KIT



1. O-Ring

2. Sealing Ring

3. Shaft Seal

4. Bearing

5. Dispensing Syringe

6. High pressure seal & Brass seat

7. Adhesive

8. Viscous Fluid

**Price:** **GBP £40.00** \*VAT and custom duties included

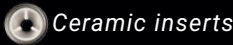


CLEANING & UNBLOCKING

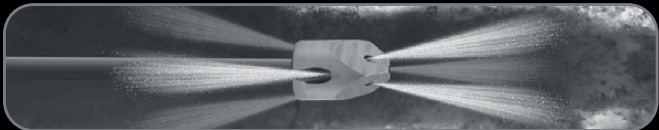
BREAKER 1/4"

Thread: 1/4"
Pipe diameter: 75 - 160 mm (recommended)
Jets: (R) 6 x M4 (7°) // (F) 3 x M4
Waterflow: from 9 gpm
Dimensions: 26 x 30 mm
Weight: 0.076 kg ( 76 gr )
Price: <b>GBP £100.00</b> *VAT and custom duties included

Our Breaker is distinguished by its ability to unblock pipes thanks to its head with three front jets, providing extreme and efficient cleaning.



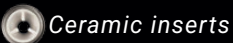
Ceramic inserts



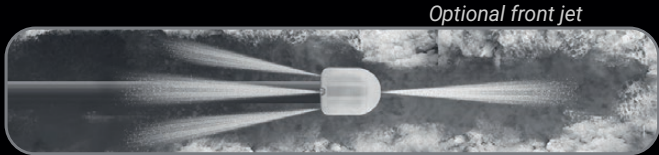
TIGER 1/4"

Thread: 1/4" or 1/8"
Pipe diameter: 75 - 160 mm (recommended)
Jets: (R) 6 x M4 (7°) // (F) 1 x M4
Waterflow: from 9 gpm
Dimensions: 26 x 33 mm
Weight: 0.057 kg
Price: <b>GBP £80.00</b> *VAT and custom duties included

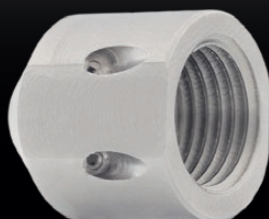
It stands out for its high thrust and small dimensions, allowing it to pass through elbows and small pipes.



Ceramic inserts



## BASIC 1/4"



**Thread:** 1/4" or 1/8"

**Pipe diameter:** 50 - 110 mm (*recommended*)

**Jets:** (R) 6 drilled jets // (F) 1 x M4

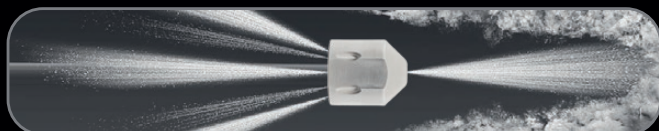
**Waterflow:** from 7 gpm

**Dimensions:** 18 x 20 mm

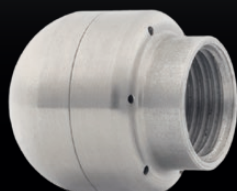
**Weight:** 0.02 kg

**Price:** GBP £45.00 \*VAT and custom duties included

Nozzle designed for unblocking and cleaning pipes in confined spaces. Its compact design allows access to narrower and more difficult areas of pipes.



## BRUNA 1/4"



**Thread:** 1/4" or 1/8"

**Pipe diameter:** 50 - 110 mm (*recommended*)

**Jets:** (R) 6 drilled jets (15°) // (F) 1 optional drilled jet

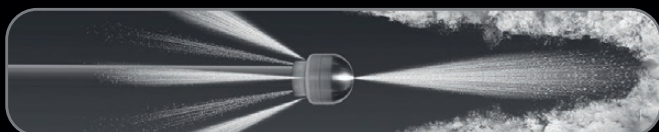
**Waterflow:** from 7 gpm

**Dimensions:** 21 x 24 mm

**Weight:** 0.04 kg

**Price:** GBP £40.00 \*VAT and custom duties included

Our Bruna 1/4" nozzle is ideal for companies looking for an economical and powerful nozzle, made in two parts for water channelling and with a very affordable price.



*Drilled jets*

## ROTATORY WIPE-CATCHER 1/4"

**Thread:** 1/4" or 1/8"

**Pipe diameter:** 50 - 160 mm (*recommended*)

**Jets:** (R) 6 x M4 // (F) 3 x M4

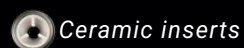
**Waterflow:** from 9 gpm

**Dimensions:** 28 x 56 mm

**Weight:** 0.155 kg

**Price:** **GBP £230.00** \*VAT and custom duties included

The 1/4" Rotatory Wipe Catcher features a rotating turbine which catches the rags when pulling backwards and can remove textile and other debris from the pipe.



Ceramic inserts



## ANACONDA 1/4"

**Thread:** 1/4"

**Pipe diameter:** 75 - 160 mm (*recommended*)

**Jets:** (R) 6 x M4 (7°) // (S) 1 x M4 // (F) 1 x M4

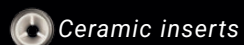
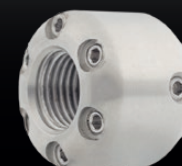
**Waterflow:** from 9 gpm

**Dimensions:** 26 x 26 mm

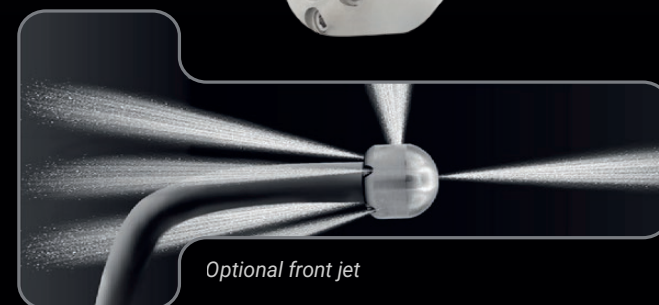
**Weight:** 0.057 kg

**Price:** **GBP £80.00** \*VAT and custom duties included

Its compact design makes it easy to pass through bends and bifurcations, minimising wear and tear and the need for maintenance, providing a reliable and durable cleaning solution.



Ceramic inserts



Optional front jet

## MINI VIBRATING 1/4"



**Thread:** 1/4" or 1/8"

**Pipe diameter:** 50 - 160 mm (*recommended*)

**Jets:** (R) 6 x M4 // (F) 3 x M4

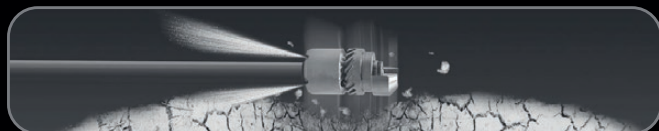
**Waterflow:** from 9 gpm

**Dimensions:** 28 x 54 mm

**Weight:** 0.165 kg

**Price:** **GBP £225.00** \*VAT and custom duties included

Designed to generate a powerful vibration, ideal for tough jobs such as removing cement and limescale deposits.



## ROOT-CUTTER 1/4"



**Thread:** 1/4" or 1/8"

**Pipe diameter:** 50 - 160 mm (*recommended*)

**Jets:** (R) 6 x M4 // (F) 3 x M4

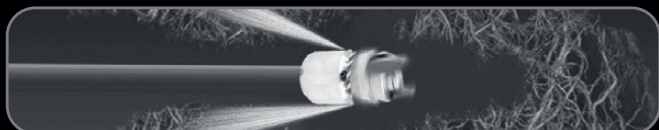
**Waterflow:** from 9 gpm


**Dimensions:** 28 x 54 mm

**Weight:** 0.158 kg

**Price:** **GBP £245.00** \*VAT and custom duties included

This nozzle is distinctive for its ability to cut and remove roots inside pipes thanks to its rotating heads with cutting parts and six rear jets.



 **Ceramic inserts**



# 1 / 8 " N O Z Z L E S

## K-TURBO 1/8" 6 JETS

**Thread:** 1/8"

**Pipe diameter:** 50 - 110 mm *(recommended)*

**Jets:** (R) 6 x M4 // (F) 1 *optional drilled jet*

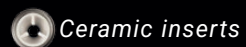
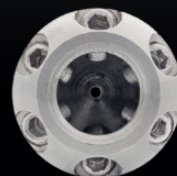
**Waterflow:** from 7 gpm

**Dimensions:** 18 x 19 mm

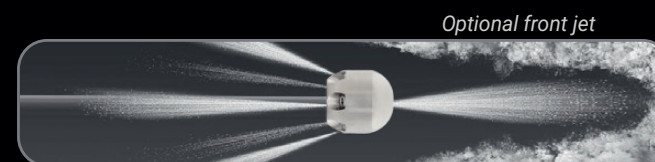
**Weight:** 0.02 kg ( 20 gr )

**Price:** **GBP £70.00** \*VAT and custom duties included

It is particularly useful for general cleaning and debris removal work on small diameter pipes.



*Ceramic inserts*



*Optional front jet*

## K-TURBO 1/8" 3 JETS

**Thread:** 1/8"

**Pipe diameter:** 40 - 75 mm *(recommended)*

**Jets:** (R) 3 drilled jets // (F) 1 *optional drilled jet*

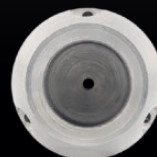
**Waterflow:** from 7 gpm

**Dimensions:** 16 x 17 mm

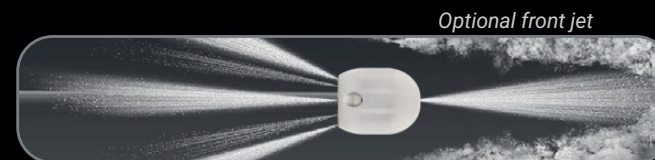
**Weight:** 0.014 kg ( 14 gr )

**Price:** **GBP £36.00** \*VAT and custom duties included

Its compact design, rear and front jets make it an indispensable tool for pipe cleaning jobs in sinks and other applications.

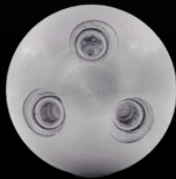


*Drilled jets*



*Optional front jet*

## BREAKER 1/8"



**Thread:** 1/8"

**Pipe diameter:** 50 - 110 mm *(recommended)*

**Jets:** (R) 6 x M4 // (F) 3 x M8 (15°)

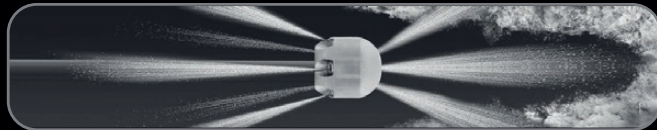
**Waterflow:** from 7 gpm


**Dimensions:** 18 x 19 mm

**Weight:** 0.02 kg

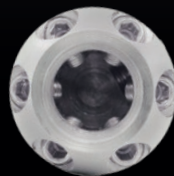
**Price:** GBP £95.00 \*VAT and custom duties included

Our Breaker is distinguished by its ability to unblock pipes thanks to its head with three front jets, providing extreme cleaning.



 *Ceramic inserts*

## ANACONDA 1/8"



**Thread:** 1/8"

**Pipe diameter:** 50 - 110 mm *(recommended)*

**Jets:** (R) 6 x M4 // (S) 1 x M4

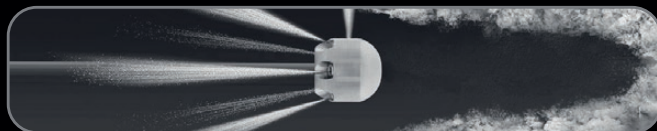
**Waterflow:** from 7 gpm


**Dimensions:** 18 x 19 mm

**Weight:** 0.02 kg

**Price:** GBP £70.00 \*VAT and custom duties included

Designed to generate powerful vibration, ideal for tough jobs like removing cement and lime scale deposits.



 *Ceramic inserts*

## CAMERA 1/4"

**Thread:** 1/4" or 1/8"

**Pipe diameter:** 75 - 200 mm *(recommended)*

**Jets:** (R) 3 x M6

**Waterflow:** from 9 gpm


**Dimensions:** 32 x 39 mm

**Weight:** 0.135 kg

**Price: GBP £155.00** \*VAT and custom duties included

Designed for easy pushing and handling of the camera head in manual pipe inspections.



 Ceramic inserts





## OTHER PRODUCTS





# INSPECTION CAMERAS

## FLEX 40 PRO

### Camera

**Camera head:** 14 mm with 90° view angle

**Resolution:** self-levelling camera head with HD 648 x 488

**Depth-of-field:** 200 mm (aprox)

**Screen size:** 10.1" (1024 \* 600) HD monitor

**Emitter:** 512 Hz signal transmitter

**Reel:** 30 metres of cable with distance counter and reset system

**Pipes:** from 32 mm to 160 mm (1.2" to 6.3")

**Keyboard & SD Output, with Built-in microphone**

**Orientation control system**

**Battery:** ~6 hours (charger, European plug, and car charger included)

**Supplied with sled set for different pipe sizes and a toolbox**

**\*FREE Report Making Software (worth £750)**

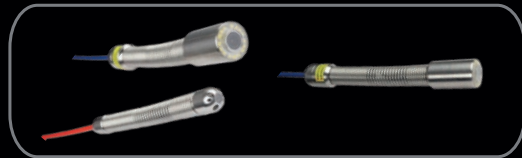
Price: **GBP £2,100.00**

\*VAT and custom duties included

The FLEX 40 PRO is specifically designed for sinks and is ideal for pipes ranging from 32 mm to 160 mm (1.2" to 6.3"). It easily navigates elbows, bends, and joints without difficulty, and it is also highly cost-effective at just £2,100. The system can now be upgraded with a larger camera head to inspect pipes from 75 mm to 300 mm (3" to 11.8"), or alternatively, it is available as a combined package including both reels with two different camera head sizes, offered at a special Price.



## FLEX 200 PRO



### Camera

**Camera head:** 23 mm with 95° view angle and a location transmitter

**Resolution:** self-levelling camera head with AHD 1920 x 1080

**Depth-of-field:** 200 mm (aprox)

**Screen size:** 10.1" (1024 \* 600) HD monitor

**Emitter:** 512 Hz signal transmitter

**Reel:** 30 metres of cable, with distance counter and reset system

**Pipes:** from 75 mm to 300 mm (3" to 11.8")

**Keyboard & SD Output, with Built-in microphone**

**Adjustable zoom and brightness for optimal image detail**

**Battery:** ~6 hours (charger included)

**Supplied with sled set for different pipe sizes and a toolbox**

**\*FREE Report Making Software (worth £750)**

Price: **GBP £2,650.00**

\*VAT and custom duties included

The FLEX 200 PRO is designed for professional inspections of medium-to-large diameter pipes, covering a range from 75 mm to 300 mm (3" to 11.8"). Equipped with a 23 mm self-levelling camera head and a 512 Hz signal emitter, it ensures precise positioning and reliable detection of pipe defects, leaks, or hidden manholes. The system combines photo and video recording with real-time annotations, distance tracking, and adjustable zoom and brightness to deliver high-quality reports. Durable and versatile, the FLEX 200 PRO is supplied with sleds for different pipe sizes, a practical toolbox, and offers approximately six hours of continuous battery operation.

## F L E X   P A C K

**Includes**

30-meter flexible reel with 14mm head for small pipes  
(from 32mm)

30-meter reel with 23mm head for pipes up to 300mm

Control computer

Price: **GBP £3,500.00**

\*VAT and custom duties included



**ROBERTO BRUNA  
SOFTWARE**

**FREE** Report Making Software (worth £750)

With the purchase of any of our cameras, we are pleased to include our R-FLOW Report Making Software, valued at £750, at no additional cost. The software is fully compatible with any camera, regardless of Brand, and can process any footage – even recordings made with your own phone. You Will never encounter compatibility issues. The licence is granted for life, with no hidden conditions, no subscription charges, and absolutely no monthly or anual fees.

## HANDS FREE

### Camera

**Camera head:** 23 mm

**Resolution:** self-levelling camera head

**Depth-of-field:** 200 mm (aprox)

**Screen size:** 10.1" ( 1024 x 600 ) HD monitor

**Emitter:** 512 Hz signal transmitter

**Reel:** 30 metres of cable

**Pipes:** from 75 mm to 300 mm (3" to 11.8")

**Keyboard & SD Output, with microphone**

**Adjustable zoom and brightness for optimal image detail**

**Battery:** ~6 hours (charger included)

**Supplied with sleds set for different pipe sizes**

**\*FREE Report Making Software (worth £750)**

Price: **GBP £2,050.00**

\*VAT and custom duties included

The Hands-Free is an ideal inspection camera for pipes measuring 75 mm to 300 mm, featuring a 23 mm self-leveling head, 512 Hz transmitter, 10-inch HD monitor, and 30 meters of cable. Equipped with recording, photo, zoom, and brightness adjustment functions, it offers quality inspection with up to 6 hours of battery life. Protective sleds for different pipe sizes are included.



## C O B R A   2

**Camera****Camera head:** 50 mm**Screen size:** 7" HD monitor**Depth-of-field:** 200 mm (aprox)**Sleds:** 110 mm, 150 mm, 220 mm**Emitter:** 512 Hz signal transmitter**Reel:** 60 metres of cable**Pipes:** from 200 mm to 500 mm**SD Output****Adjustable zoom and brightness for optimal image detail****Battery:** ~6 hours (charger included)**Supplied with sled set for different pipe sizes****\*FREE Report Making Software (worth £750)**Price: **GBP £4,100.00**\*VAT and custom duties included

The Cobra 2 is an inspection camera ideal for sewer pipes from 200 mm to 500 mm, featuring a 50 mm self-leveling head, 512 Hz transmitter, 7-inch HD monitor, and 60 meters of cable. Equipped with recording, photo, zoom, and brightness adjustment functions, it offers detailed and efficient inspection with up to 6 hours of battery life. Protective sleds for different pipe sizes are included.



### NOZZLE HOLDER

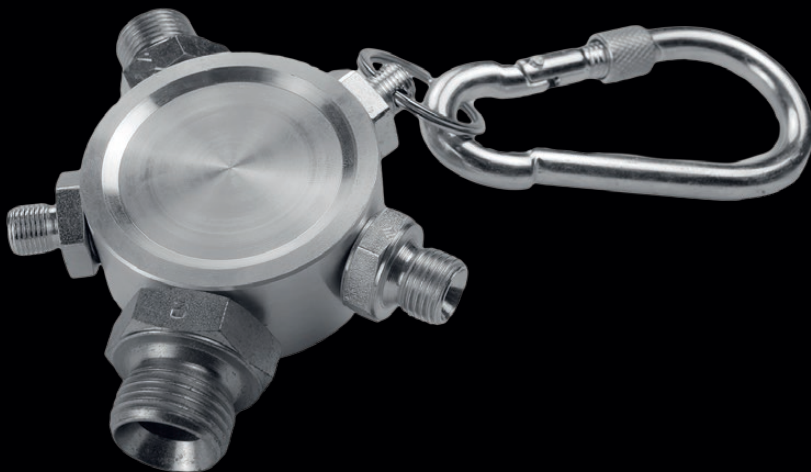
**Dimensions:** 26 x 55 mm

**Weight:** 0.369 kg

Designed to be attached to your work belt for quick access to your 4 favourite nozzles, you can have nozzles at your fingertips to suit the needs of the job, quickly and efficiently.

Available for 1/2" | 3/8" | 1/4" | 1/8" nozzles and with the possibility to combine all of them in mixed form on the same key ring.

**Price: GBP £55.00** \*VAT and custom duties included



## MAGNETIC MANHOLE LIFTER



**Stainless steel**

**Magnet diameter:** 100 mm

**Grip force:** 400 kg aprox

**Protection case included**

**Weight:** 3.7 kg

Price: **GBP £280.00** \*VAT and custom duties included

## FLEX HOSES



**Hose:** 1/4"

**Thread:** 1/8"

**Pipes:** from 32 to 160 mm ( 1" to 6" )

10 m: **GBP £165.00** \*VAT and custom duties included

15 m: **GBP £230.00** \*VAT and custom duties included

20 m: **GBP £300.00** \*VAT and custom duties included

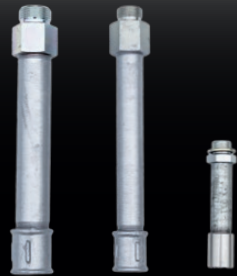
30 m: **GBP £440.00** \*VAT and custom duties included

50 m: **GBP £790.00** \*VAT and custom duties included

Nozzles are not included.

## OTHER PRODUCTS

### ANTI-RETURN BAR



Thread:	1"	3/4"	1/2"
Weight:	846 gr	593 gr	218 gr
Dimensions:	1270x48 mm	265x41 mm	129x30 mm
Price:	£90.00	£85.00	£75.00

*Bar to be placed between hose and nozzle*

*\*VAT and custom duties included*



### REEL

**Connection:** 1/2"

**Nozzle holder**

**Dimensions:** 300 x 300 x 300 mm  
(11.8" x 11.8" x 11.8")

**Weight:** 4 kg

**Price:** **GBP £325.00** *\*VAT and custom duties included*

Flex hose not included.



## TURBOROTATING



**Thread:** 1/4"

**Dimensions:** 41 x 84 mm

**Weight:** 266 gr

Adaptable to all other sizes

Price: **GBP £140.00** \*VAT and custom duties included

## V E N T U R Y



**Thread:** 1/2"

**Waterflow:** from 9 GPM

**Dimensions:** 183 x 100 mm ( 7.2"x 3.9")

**Weight:** 0.45 kg

**Jets:** 1 x M13

Price: **GBP £110.00** \*VAT and custom duties included

**BAR**

**Dimensions:** 229 x 43 mm ( 9" x 1.7" )

**Weight:** 0.77 kg

Price: **GBP £65.00** \*VAT and custom duties included

---

## **WARNING**

---

Operations with waterjetting equipment can be potentially hazardous. Caution **MUST** be exercised prior to and during machine and water jet tool use.

Please read and follow all of these instructions. Deviating from safety instructions and recommended practices can lead to severe injury and/or death.

The immediate work area **MUST** be marked off to keep out untrained persons.

Inspect the equipment for visible signs of deterioration, damage, and improper assembly. Do not operate if damaged, until repaired.

Make sure all threaded connections are tight and free of leaks.

Always de-energize the system before opening a door to service or replace any parts. Failure to do so can result in severe injury and/or death.

### **PRE-RUN SAFETY CHECK**

Install mechanical stops, stingers and backout preventers as appropriate when doing any tube, pipe or vessel cleaning.

Complete a job specific risk assessment and act on the resulting actions.

Ensure the waterjetting zone is properly barricaded and that warning signs are posted.

Ensure the work place is free of unnecessary objects (e.g. loose parts, hoses, tools).

Ensure all Operators are using the correct Personal Protective Equipment (PPE).

Check that the air hoses are properly connected and tight.

Check all hoses and accessories for damage prior to use. Do not use damaged items. Only high quality hoses intended for waterjetting applications should be used as high-pressure hoses.

Check all high-pressure threaded connections for tightness.

Operate the high-pressure water at full pressure and, if applicable, use the Pneumatic Foot Pedal Dump Control to verify that the dump valve is working properly.

Ensure that Operators never connect, disconnect, or tighten hoses, adapters, or accessories with the high-pressure water pump unit running.

Ensure no personnel are in the jetting zone.

### **PERSONAL PROTECTIVE EQUIPMENT**

Use of Personal Protective Equipment (PPE) is dependent on the working pressure of water and the cleaning application. Managers, Supervisors, and Operators **MUST** carry out a job specific risk assessment to define the exact requirements for PPE.

Hygiene—Operators are advised to wash thoroughly after all waterjetting operations to remove any waterblast residue which may contain traces of harmful substances.

First aid provision—users **MUST** be provided with suitable first aid facilities at the operation site.

#### **PPE MAY INCLUDE:**

Eye protection: Full face visor

Foot protection: Kevlar® brand or steel toe capped, waterproof, non-slip safety boots

Hand protection: Waterproof gloves

Head protection: Hard hat that accepts a full face visor and ear protection

Body protection: Multi-layer waterproof clothing approved for water jetting

Hose protection: Hose shroud

Respiratory protection: May be required; refer to job specific risk assessment

Roberto Bruna has designed and manufactured this equipment considering all hazards associated with its operation. Roberto Bruna assessed these risks and incorporated safety features in the design. Roberto Bruna **WILL NOT** accept responsibility for the results of misuse.

**IT IS THE RESPONSIBILITY OF THE INSTALLER/OPERATOR** to conduct a job specific risk assessment prior to use. Job specific risk assessment **MUST** be repeated for each different set up, material, and location.

The risk assessment **MUST** conform to the Health and Safety at Work Act 1974 and other relevant Health and Safety legislation.

The risk assessment **MUST** consider potential material or substance hazards including: Aerosols, Biological and microbiological (viral or bacterial) agents, Combustible materials, Dusts, Explosion, Fibers, Flammable substances, Fluids, Fumes, Gases, Mists, Oxidizing Agents.



## Limited lifetime Warranty

Our nozzle products come with a lifetime warranty limited to manufacturing defects only. The warranty covers defects in materials or workmanship that occur under normal use.

This warranty does not cover:  
Damage caused by misuse, abuse, or negligence  
Unauthorized repairs or modifications  
Normal wear and tear

To make a warranty claim, proof of purchase is required, and the product must be inspected to confirm the issue is due to a manufacturing defect.





**ROBERTO BRUNA**

[uknozzles@robertobruna.com](mailto:uknozzles@robertobruna.com)

[sewernozzlesuk.com](http://sewernozzlesuk.com)

**OFFICE: +44 7751 880888**

